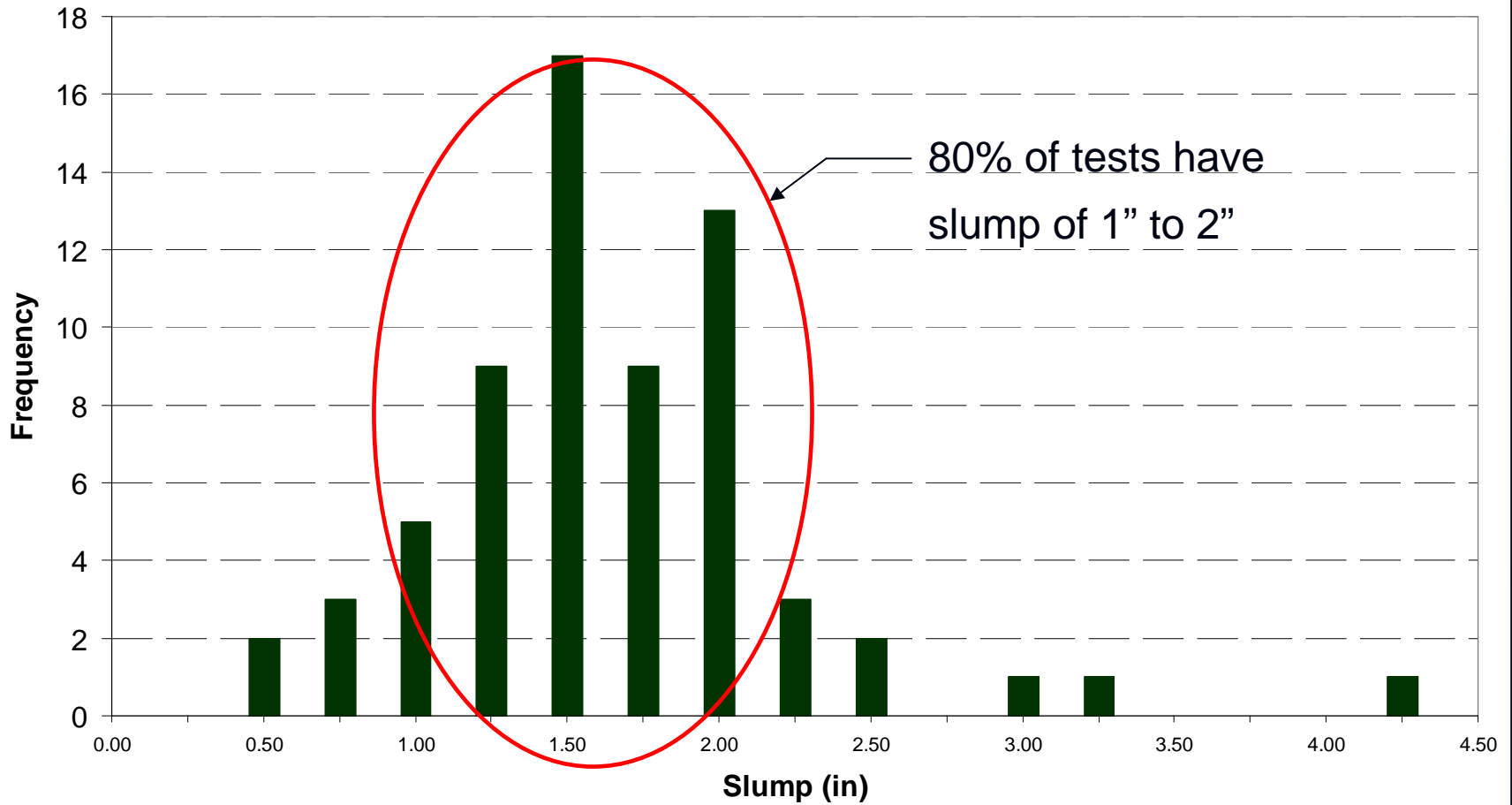


# TAC Meeting

## October 25, 2005

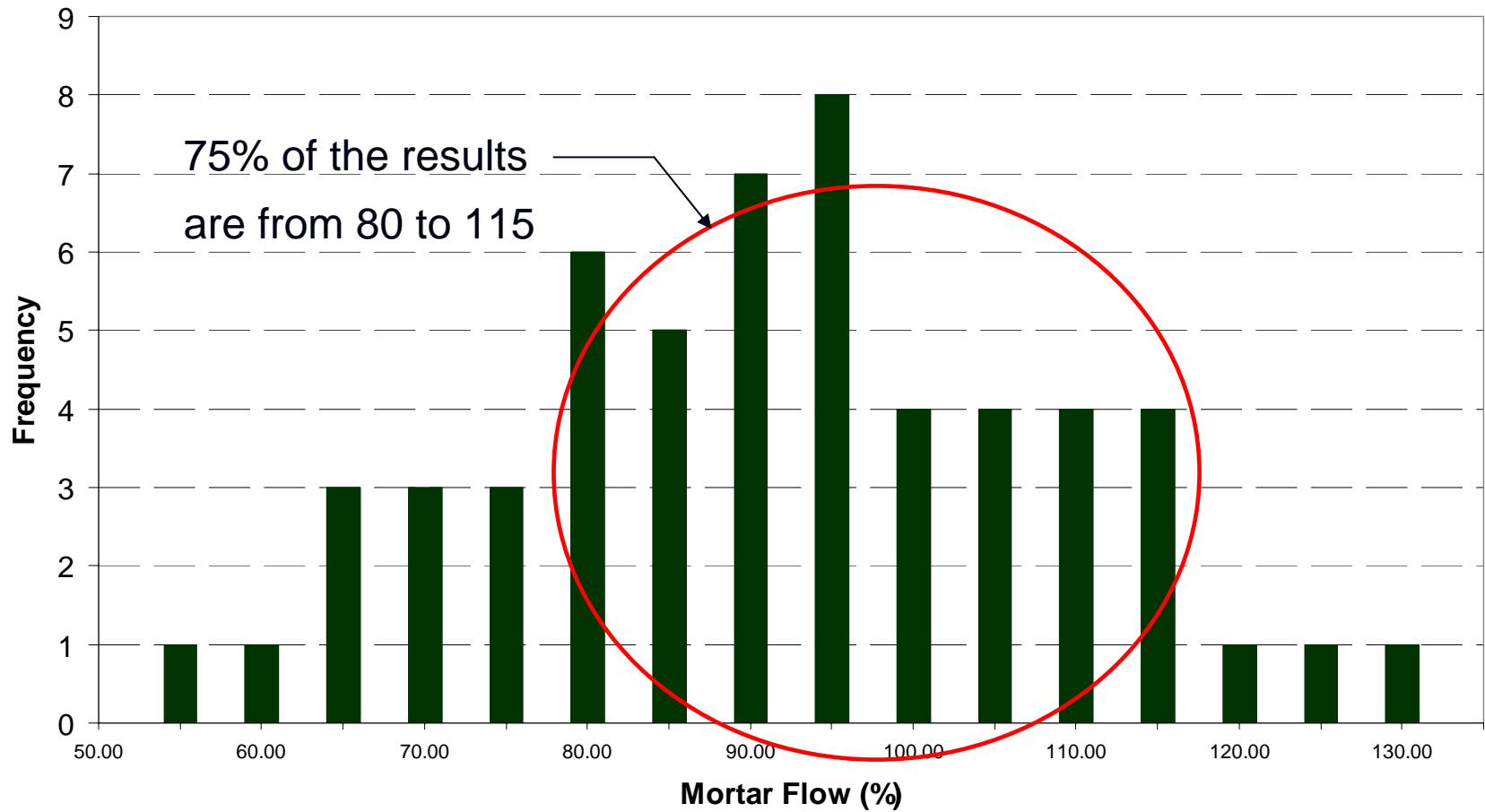
TPF-5(066) Material and Construction  
Optimization for Prevention of Premature  
Distress in PCC Pavements

## Slump Data Through Sep. 2005



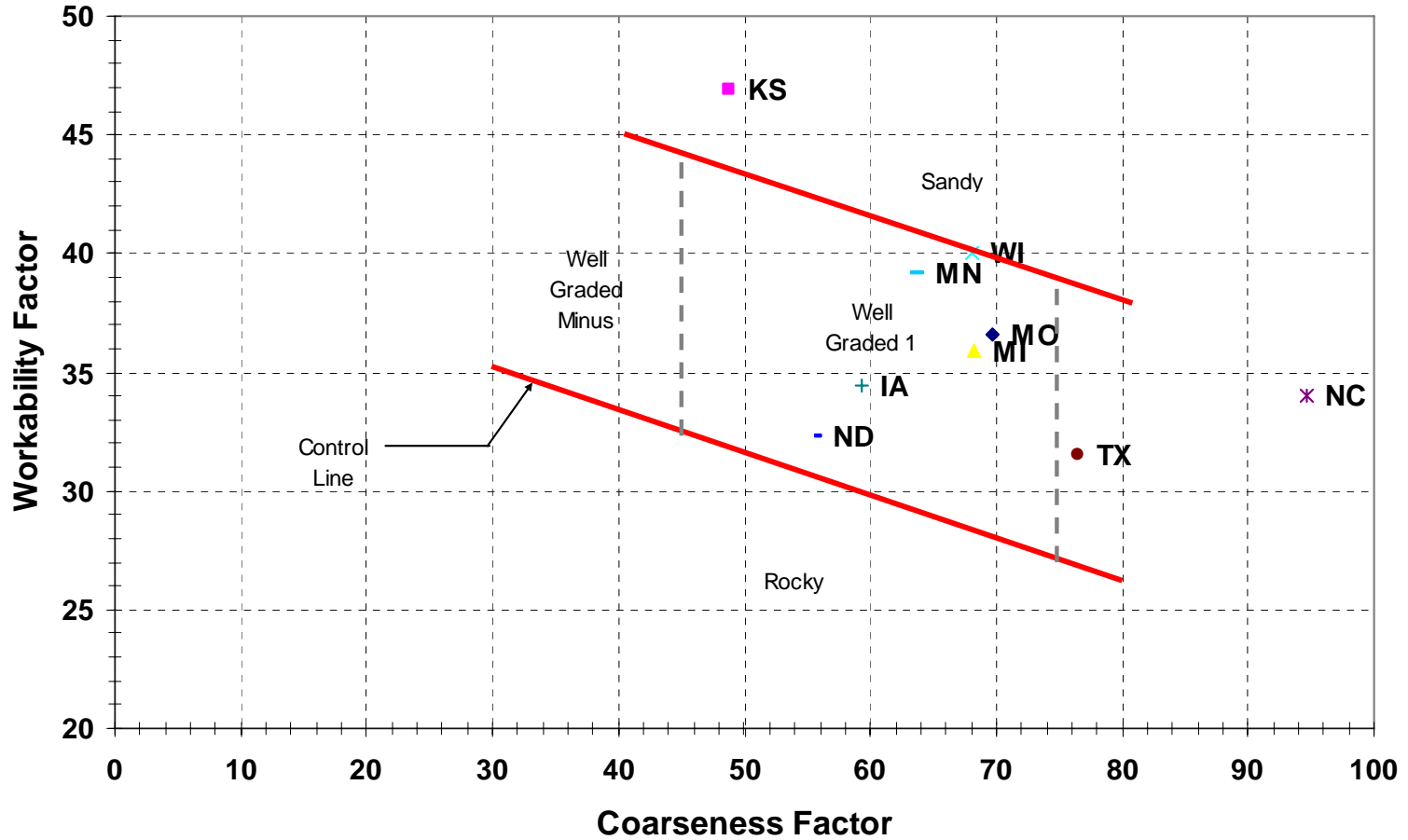
Mean	1.6"
Median	1.5"
Minimum	0.5"
Maximum	4.25"

## Mortar Flow Data Through Sep. 2005

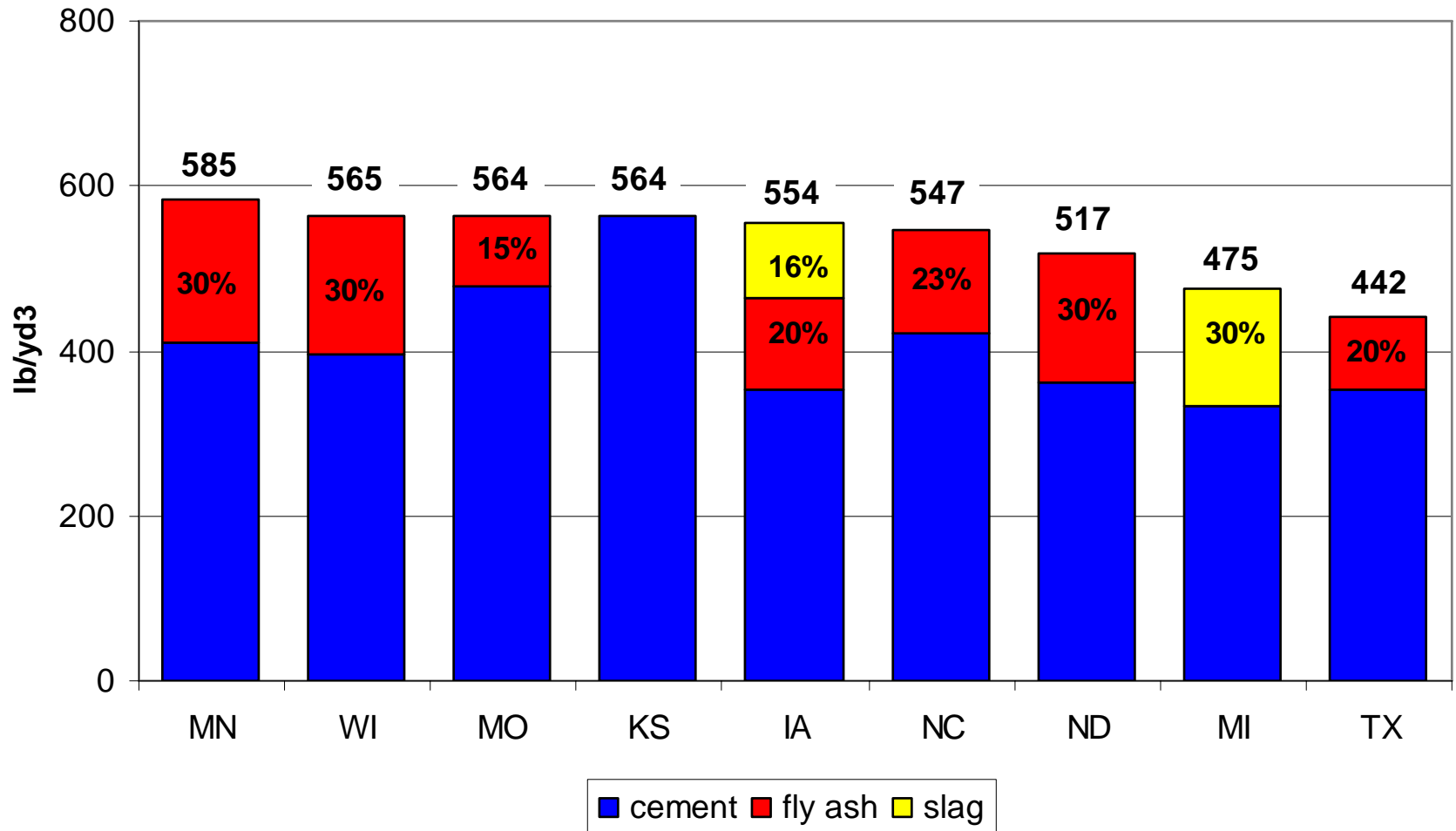


Mean	90%
Median	90%
Minimum	52%
Maximum	126%

# Workability Factor vs. Coarseness Factor



## Binder Content



Total quantities are close, but different combinations

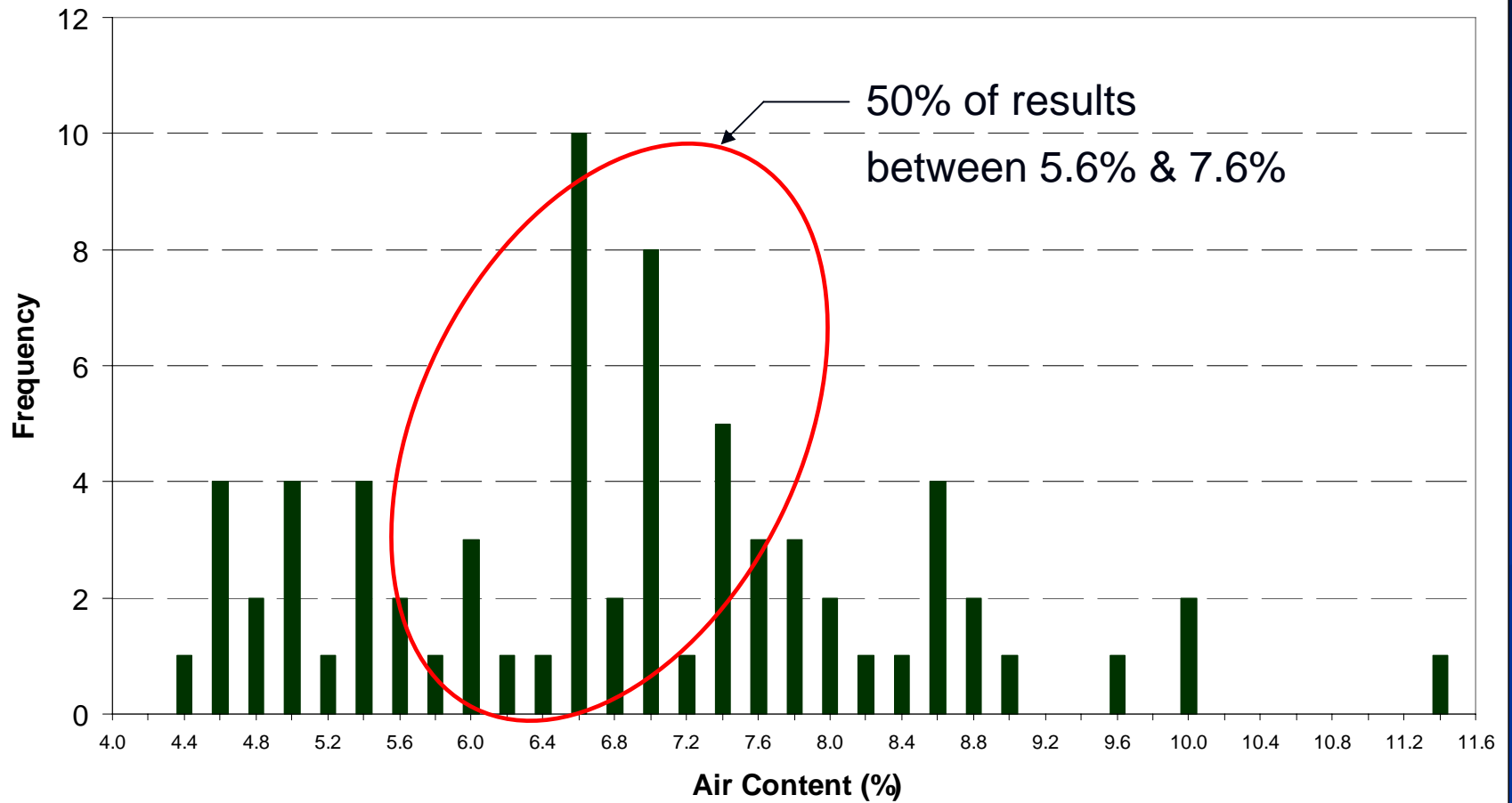


# TAC Meeting

## October 25, 2005

TPF-5(066) Material and Construction  
Optimization for Prevention of Premature  
Distress in PCC Pavements

## Air Content Data Through Sep. 2005



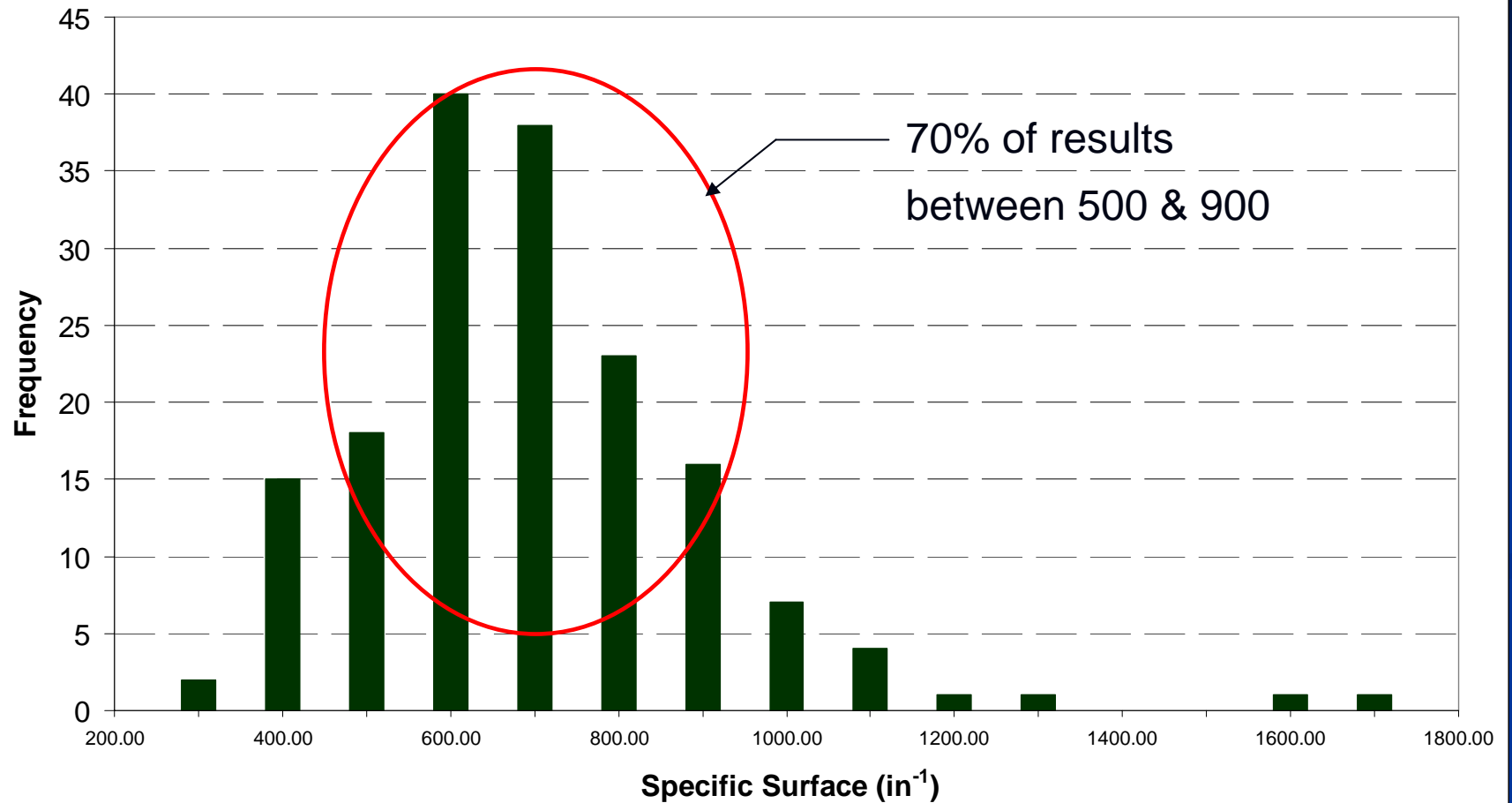
Mean	6.8%
------	------

Median	6.7%
--------	------

Minimum	4.4%
---------	------

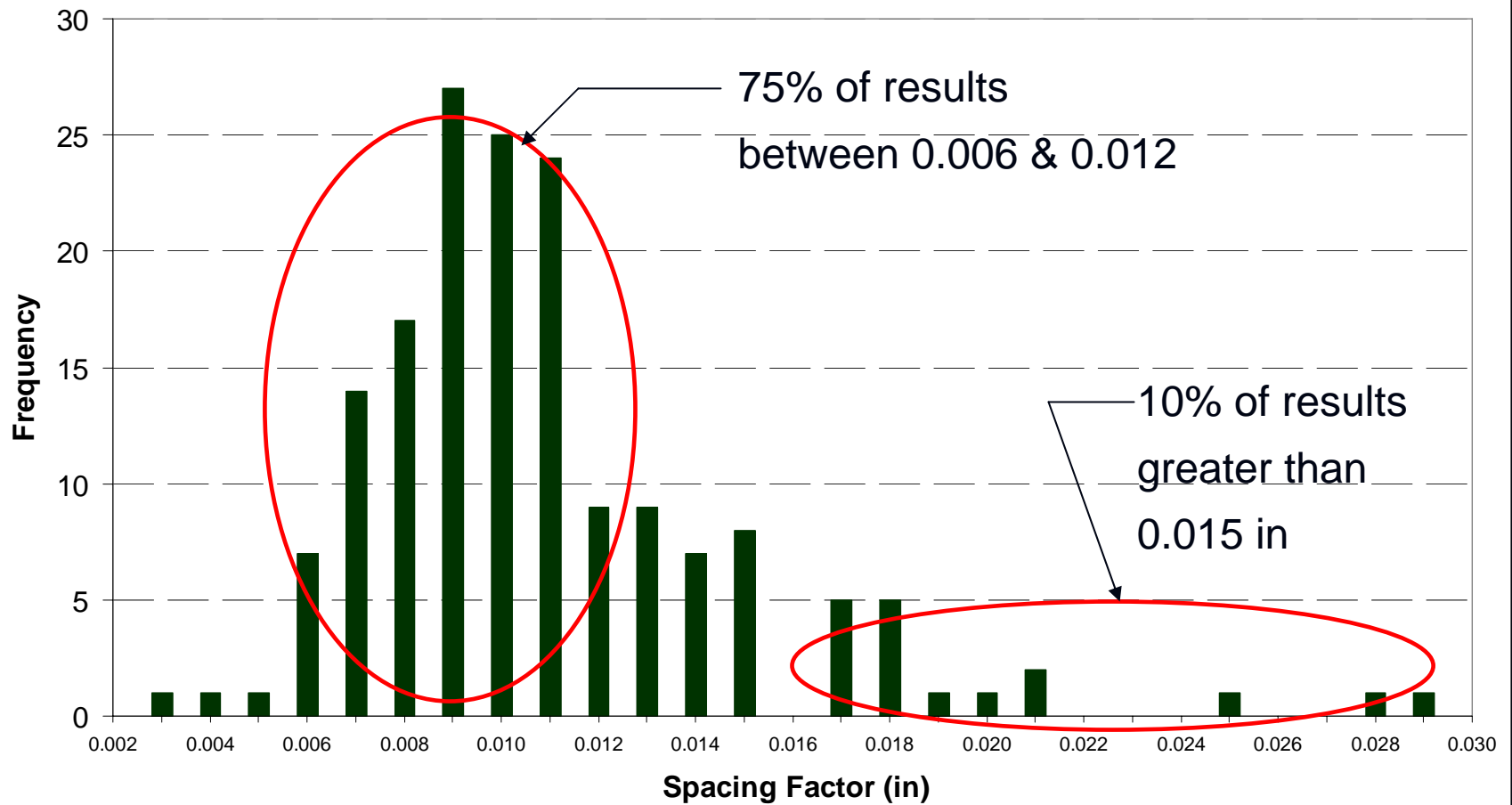
Maximum	11.3%
---------	-------

## Specific Surface Data Through Sep. 2005



Mean	650
Median	629
Minimum	267
Maximum	1367

## Spacing Factor Data Through Sep. 2005



Mean	0.0105
Median	0.0097
Minimum	0.0025
Maximum	0.0284

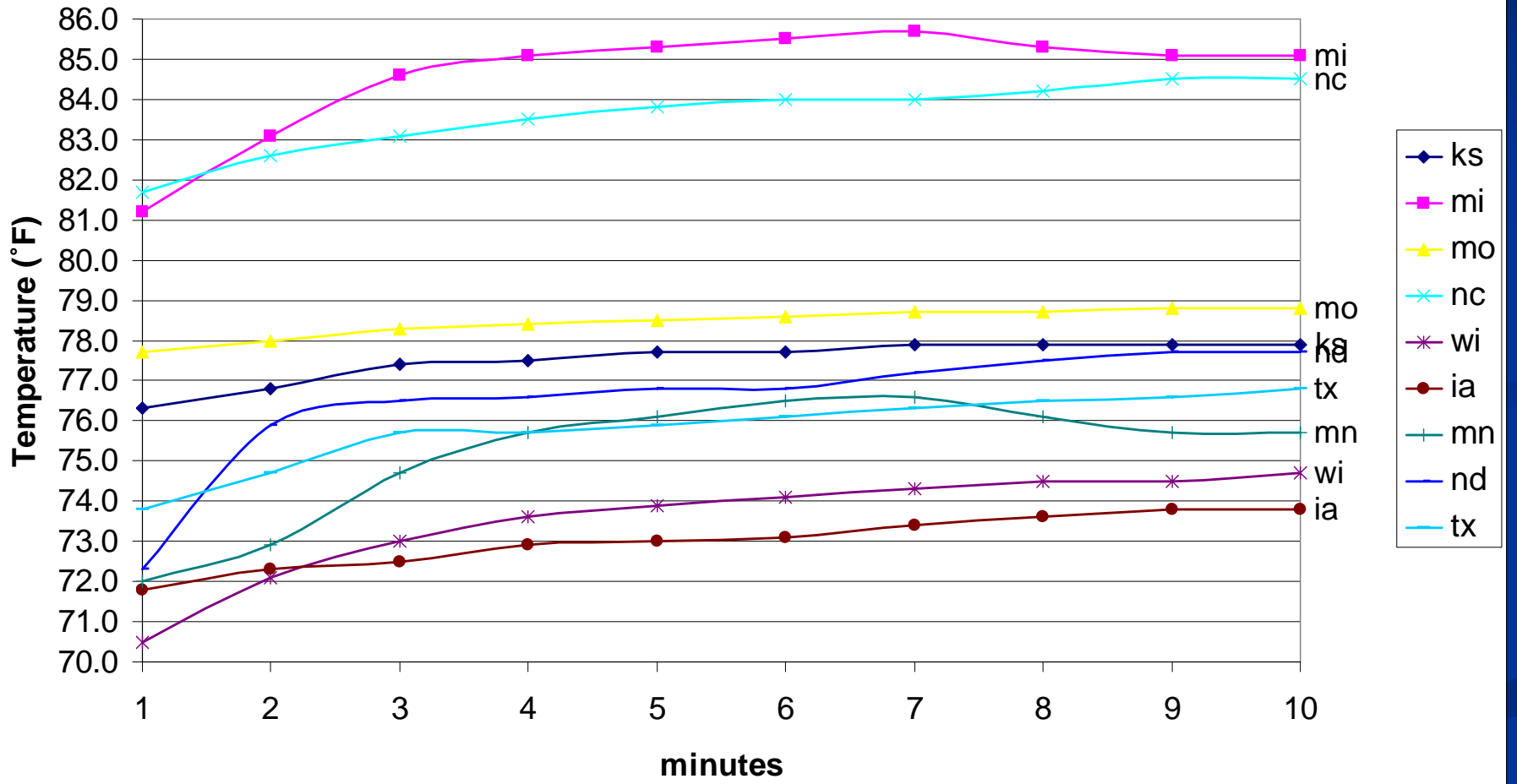


# TAC Meeting

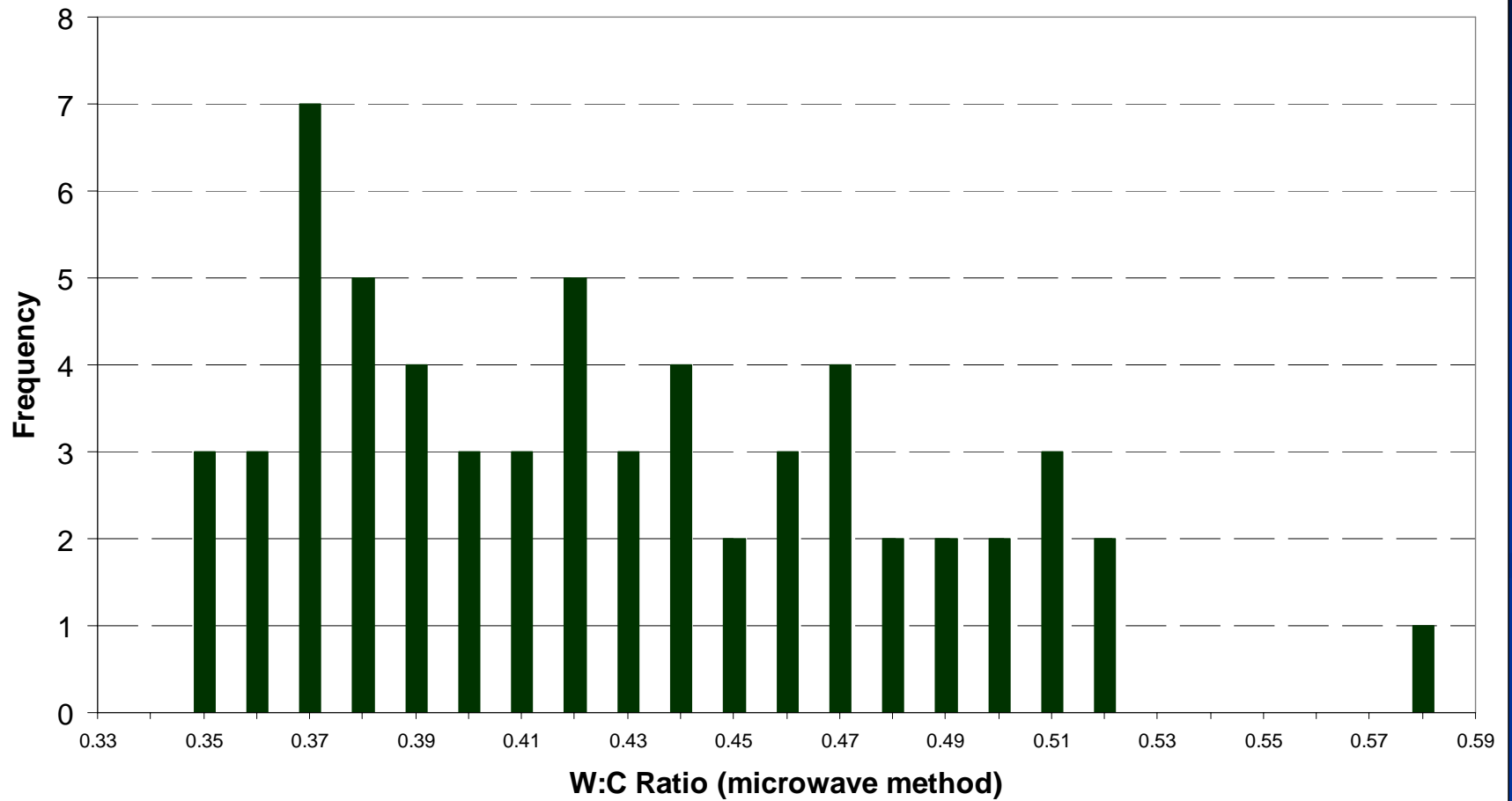
## October 25, 2005

TPF-5(066) Material and Construction  
Optimization for Prevention of Premature  
Distress in PCC Pavements

# Heat Generation Coffee Cup

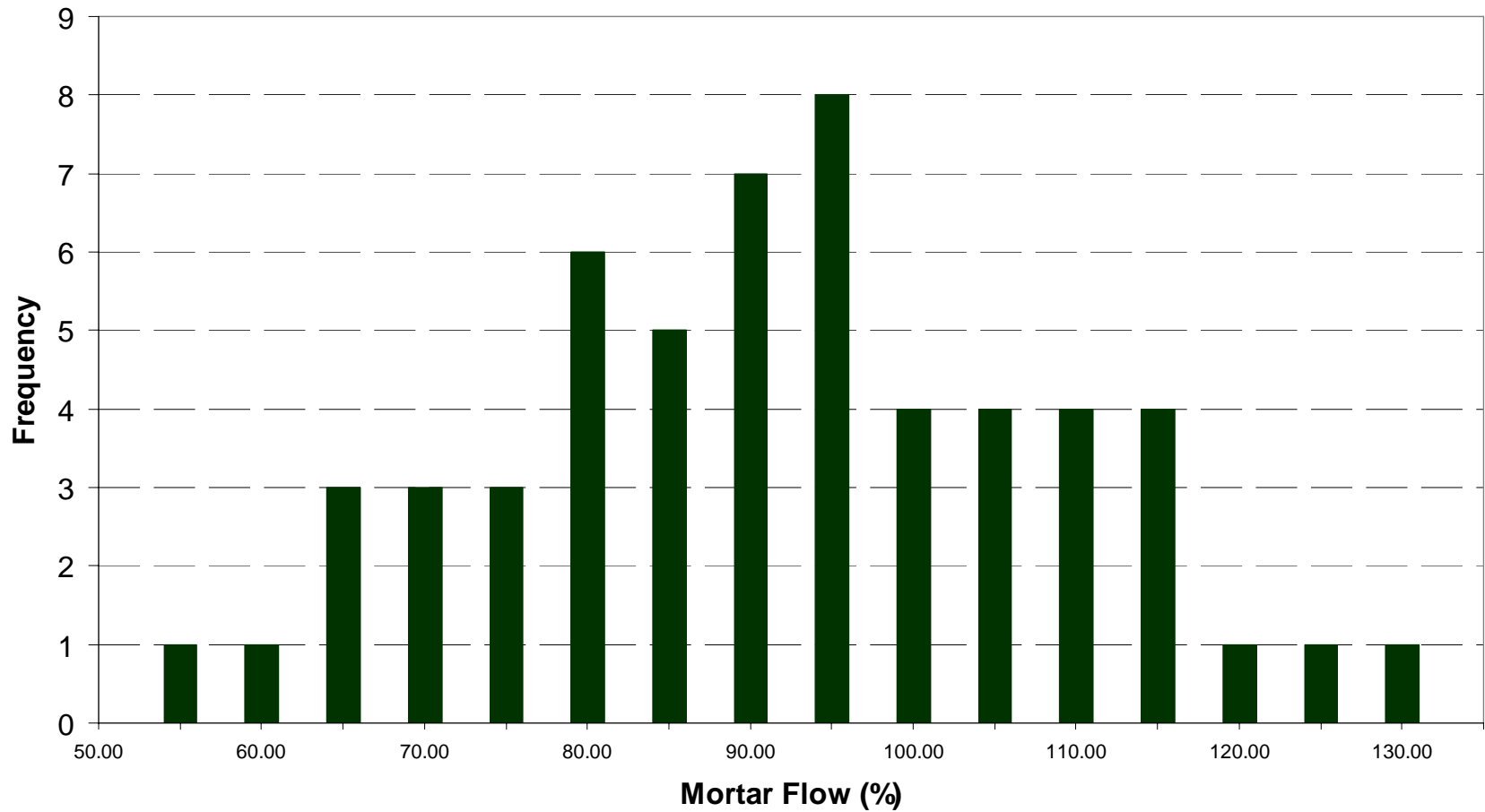


## W:C Ratio Data Through Sep. 2005



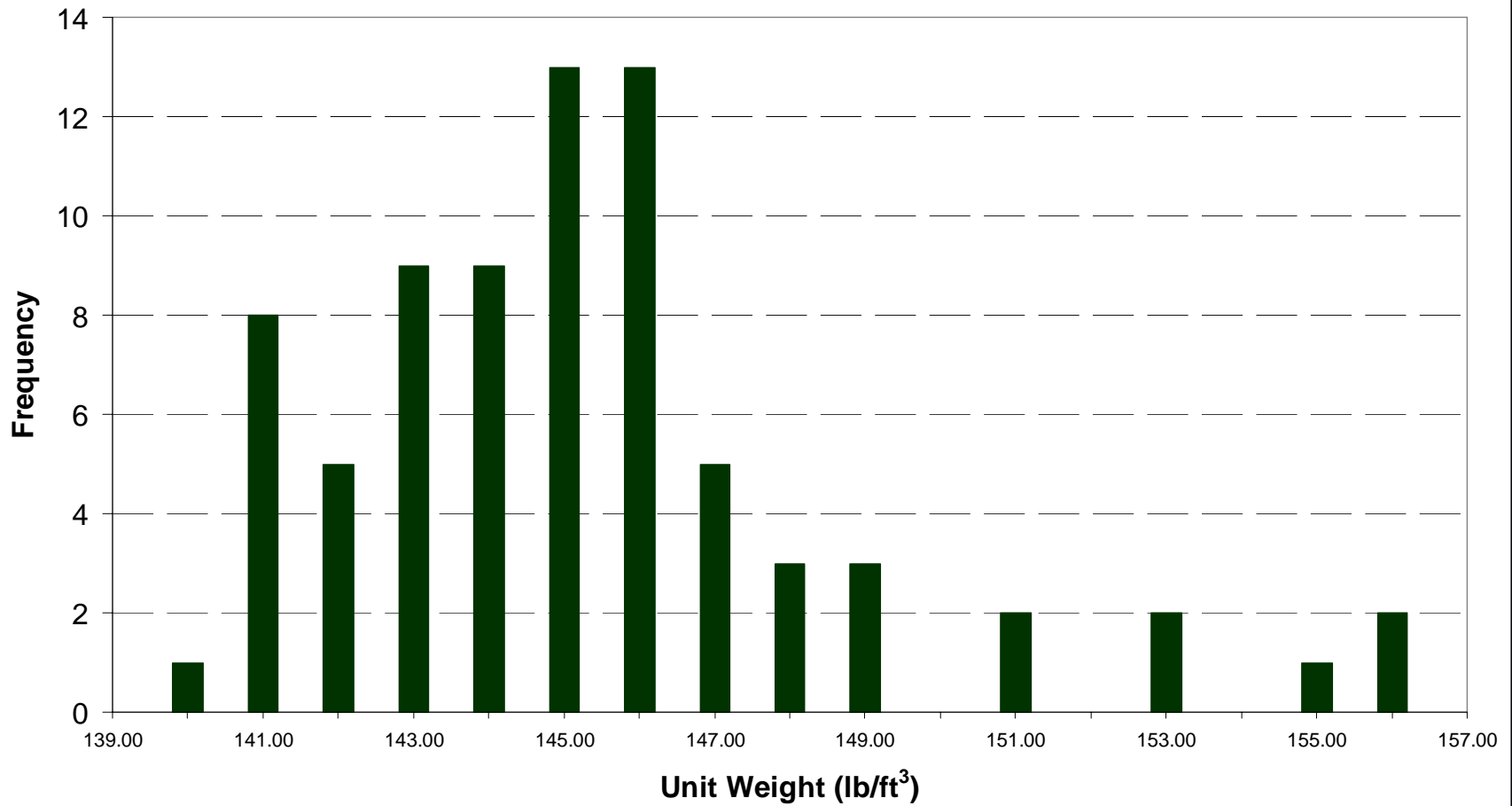
Mean	0.42
Median	0.42
Minimum	0.34
Maximum	0.58

## Mortar Flow Data Through Sep. 2005



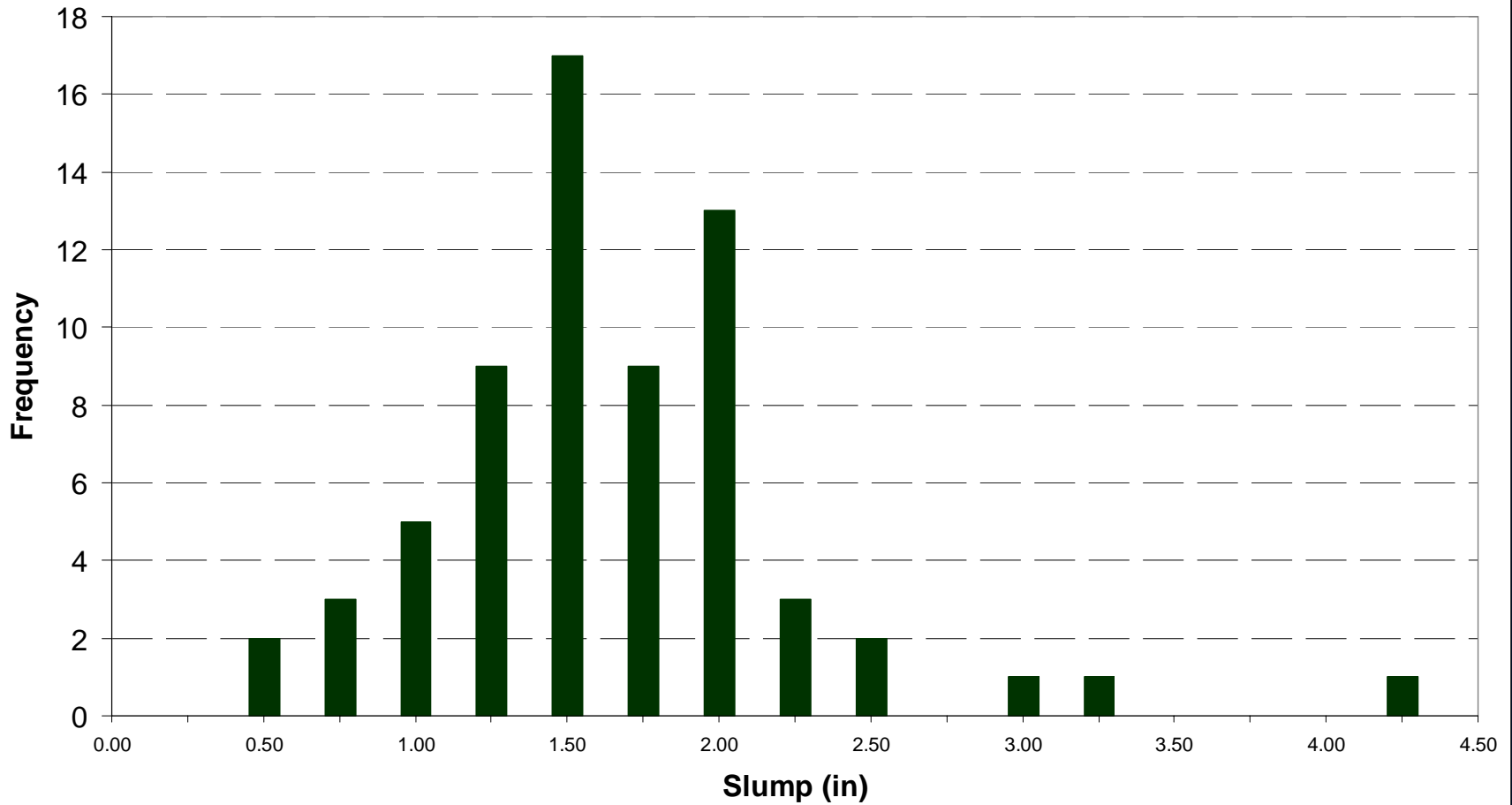
Mean	90%
Median	90%
Minimum	52%
Maximum	126%

## Unit Weight Data Through Sep. 2005



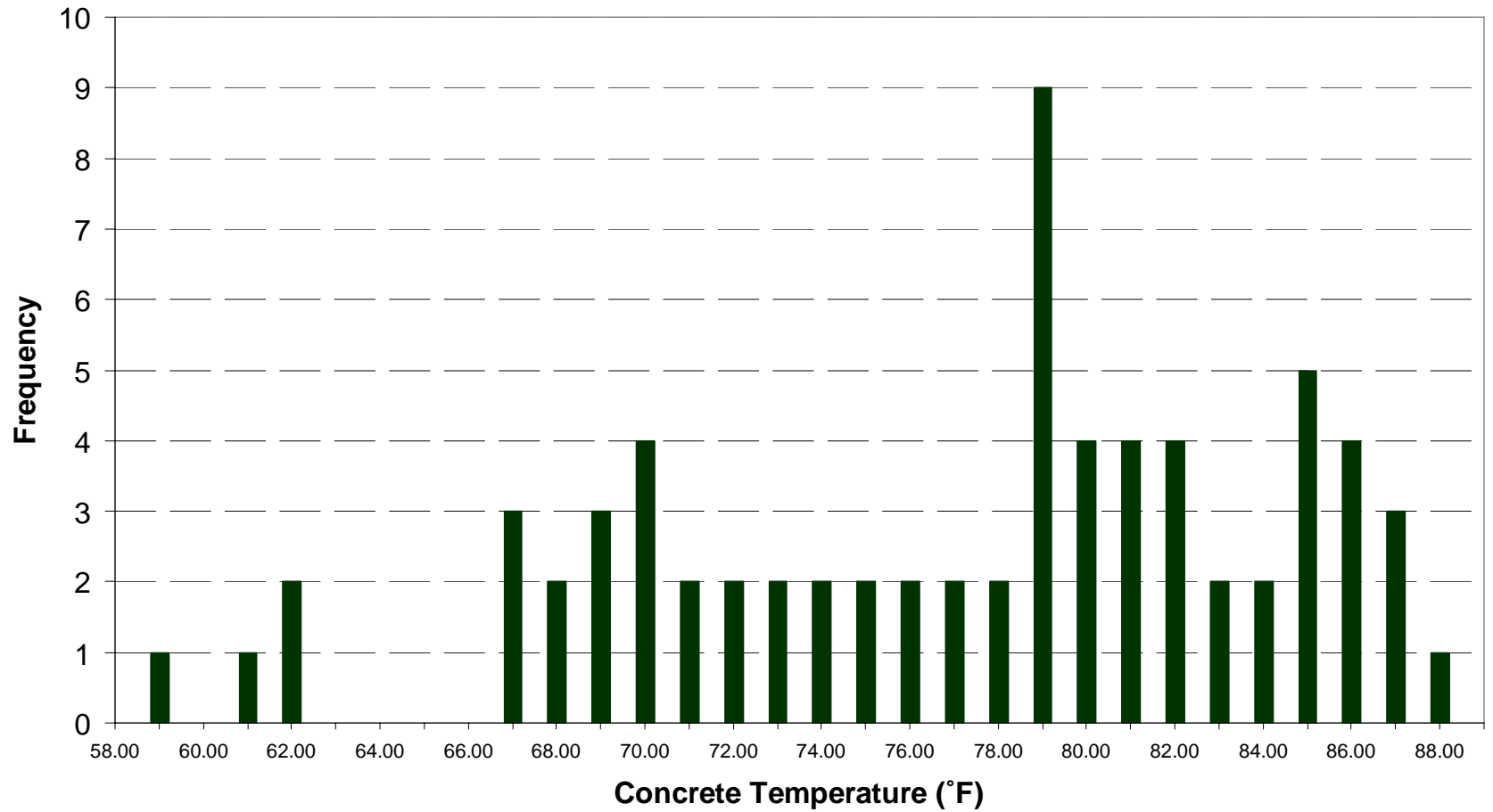
Mean	145 lb/ft <sup>3</sup>
Median	144 lb/ft <sup>3</sup>
Minimum	140 lb/ft <sup>3</sup>
Maximum	156 lb/ft <sup>3</sup>

## Slump Data Through Sep. 2005



Mean	1.6"
Median	1.5"
Minimum	0.5"
Maximum	4.25"

## Concrete Temperature Data Through Sep. 2005



Mean	77 °F
Median	79 °F
Minimum	58 °F
Maximum	88 °F

